

Manifold

MCU



Description

The manifold can be used for both supply and exhaust air. It is available in several types and dimensions.

The manifolds are designed for floor installation but can be used at other locations as well.

All types have couplings with Lindab safe sealings for connections of SR spiral-seamed ducts or semiflexible ducts LFPE. Use the transition piece RCFU, with Smart Lock function, to connect the LFPE 76/90-dimension to InDomo manifolds and plenum boxes with Ø80 mm couplings.

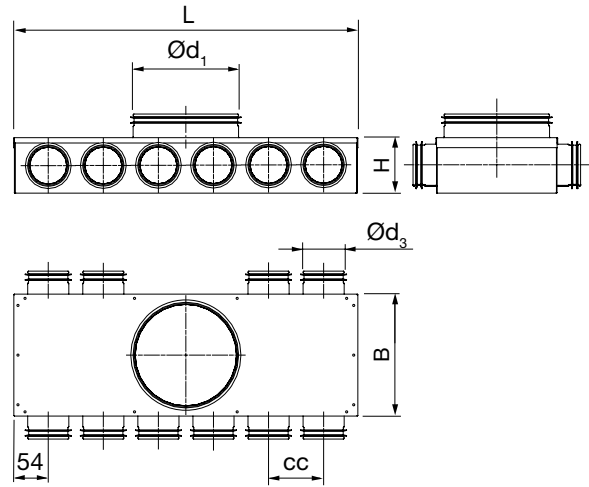
Boxes with Ø 76 couplings with Lindab safe sealings is intended for direct connection of the semiflexible duct LFPE 76/90. It is not intended for SR spiral-seamed duct.

The Smart Lock function allows you to fasten LFPE effortlessly to the Safe couplings.

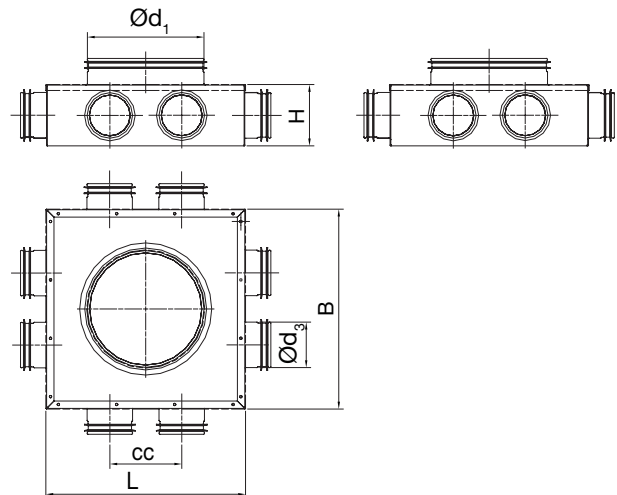
Two turnable anchor plates, placed on the bottom of the manifold, can be used for fixation.

Fulfills air tightness class D.

Dimensions

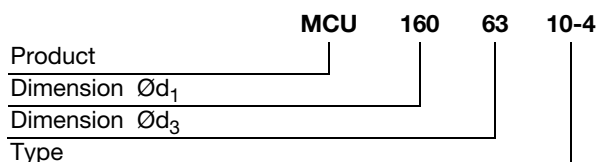


MCU 160 63 8, 160 80-8, 200 80-8



Ød ₁ nom	Ød ₃ nom	Type	L mm	B mm	H mm	cc mm	m kg
125	63	6-0	520	185	88	83	2,30
160	63	6-4	520	185	88	83	2,30
160	63	8	275	275	88	98	1,80
160	63	10-4	852	185	88	83	3,40
160	76	6-0	622	185	108	100	2,41
160	76	8	275	275	108	115	1,76
160	76	8-0	822	185	108	100	3,08
160	80	6-0	622	185	108	100	2,41
160	80	8	275	275	108	115	1,76
160	80	8-0	822	185	108	100	3,08
200	76	8	275	275	108	115	1,75
200	76	10-0	1022	221	108	100	4,19
200	80	8	275	275	108	115	1,75
200	80	10-0	1022	221	108	100	4,19

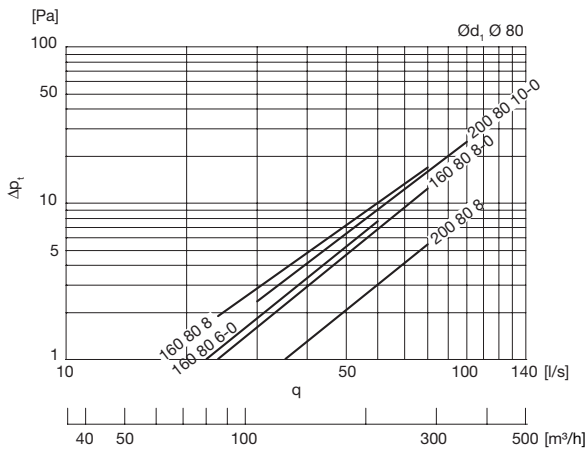
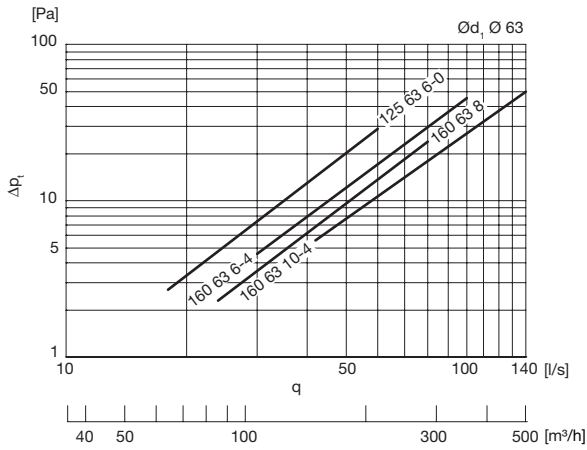
Ordering example



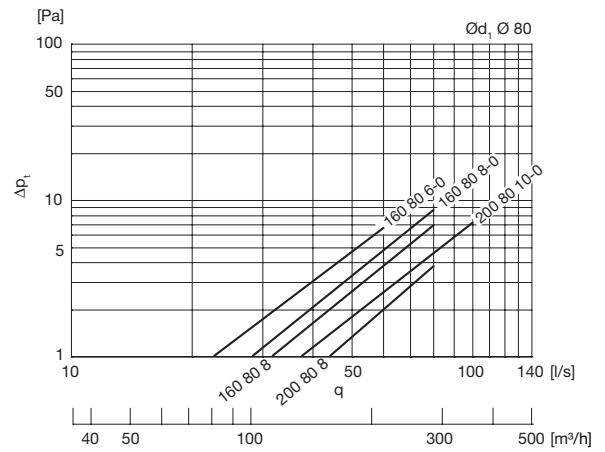
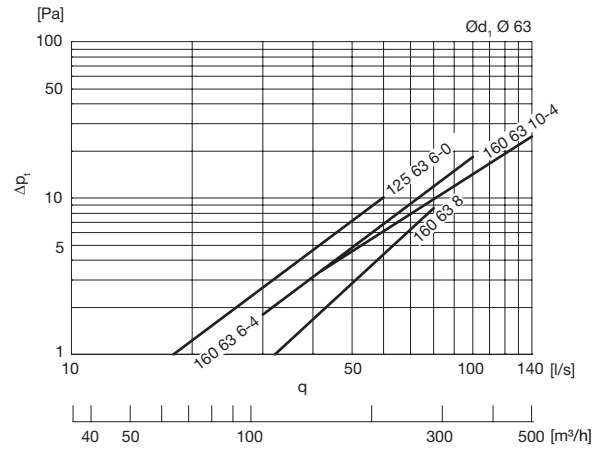
Manifold

Technical data

Supply



Exhaust



- 1
- 2
- 3
- 4
- 5
- 6
- 7
- 8
- 9
- 10
- 11
- 12
- 13
- 14
- 15
- 16
- 17
- 18